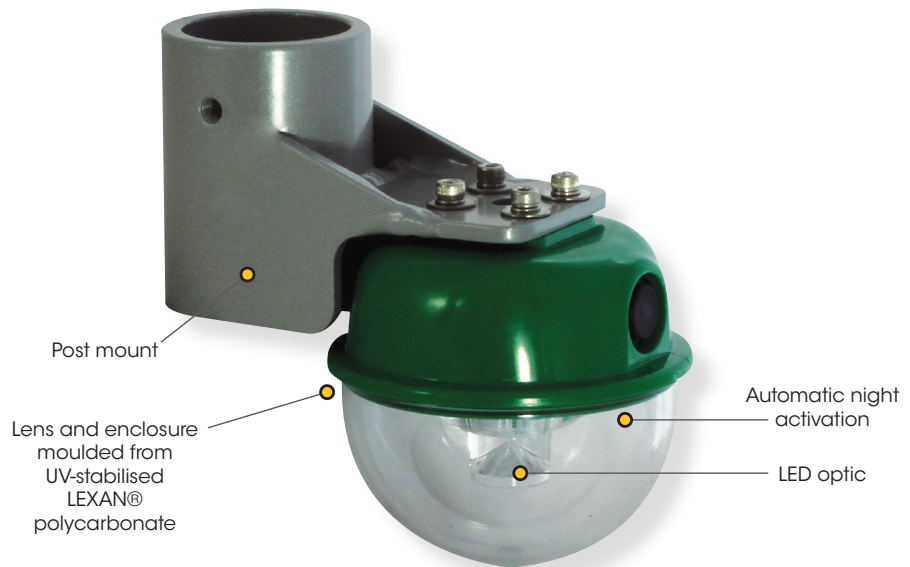


Bridge Light

SL-BR



Also available with optional solar/battery systems and optional mounting accessories



The Sealite Advantage

- Up to 4NM visible range
- IR programmable (VDC Model only)
- Able to operate in conjunction with existing power supplies
- Optional solar/battery systems available
- Optional universal AC: will accept between 110-240VAC
- Optional mounting accessories



Sectorized Bridge Light

The SL-BR is an LED Bridge Light specifically designed to clearly mark bridges and structures extending over navigable waterways and is used extensively throughout the USA. The SL-BR has been designed to offer superior visibility with up to 4NM visible range, and operates in conjunction with existing power supplies.

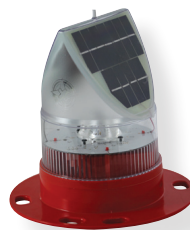
The light is available as a 180° sectorized red model or 360° green model and comes fixed-on as standard. The fixtures are also available with a range of factory-set flash characteristics and sectoring requirements to suit local regulations.

The light is available in two configurations, nominal 12VDC or universal AC (110-240VAC).

The 12VDC model may be provided with an IR programmer for added functionality. Programmable features include; intensity adjustment, flash code adjustment, battery diagnostics and ON/OFF lux setting adjustment.

The SL-BR can also be supplied as a complete solar/battery system to comply with requirements of regional governing bodies such as the U.S. Coast Guard, or the IALA Recommendations for the marking of fixed bridges over navigable waters.

Sealite has a range of other short, medium and long range marine lanterns that may also be used to comply with bridge lighting requirements.



SL-70 180° model for bridge fenders & abutments



SL-155 Series bridge lights

Premier Materials Technology, Inc.

7401 Central Ave. NE • Minneapolis, MN 55432

Phone 763-785-1411 • Fax 763-785-1509



Manufactured by Sealite

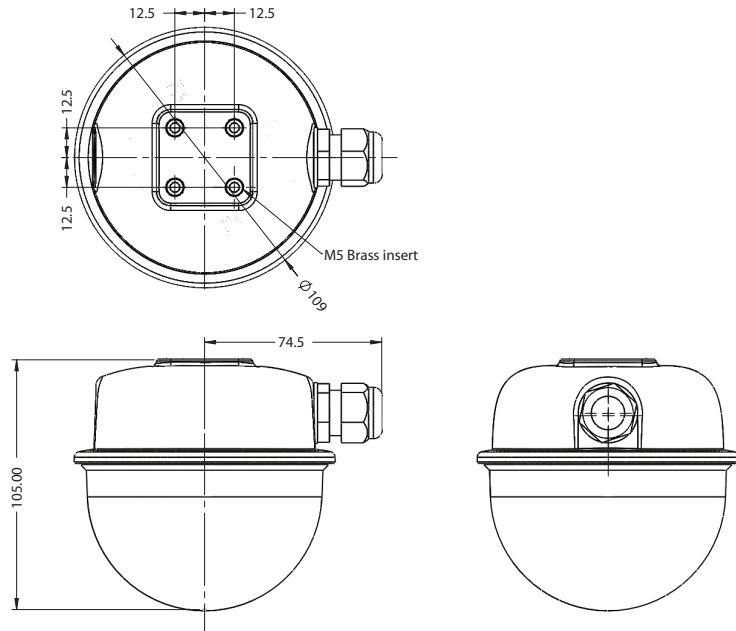
Delivering quality marine products since 1992

www.premiermaterials.com

800-262-2275

Bridge Light

SL-BR



SPECIFICATIONS * SL-BR

Light Characteristics

Light Source
Available Colours
Visible Range (NM)

Horizontal Output (degrees)
Vertical Divergence (degrees)
Available Flash Characteristics
LED Life Expectancy (hours)

Electrical Characteristics

Current Draw (mA)
Circuit Protection
Nominal Voltage (V)

Temperature Range

Physical Characteristics

Body Material
Lens Material
Lens Diameter (mm/inches)
Lens Design
Mounting
Height (mm/inches)
Width (mm/inches)
Mass (kg/lbs)
Product Life Expectancy

Certifications

CE
IALA
Quality Assurance

Intellectual Property

Patents
Trademarks

Warranty *

Options Available

LED

Red, Green, other colours available on request
AT @ 0.74: 2 (nominal)
AT @ 0.85: 2.3

360 or 180

9

Steady-on (standard). Other factory set flash patterns available on request
>100,000

VDC Model: 40 @ 12 VDC

Integrated

VDC Model: 12-48 VDC

VAC Model: 110-240 VAC

-40 to 80°C

LEXAN® Polycarbonate - UV-stabilised

LEXAN® Polycarbonate - UV-stabilised

107 / 4¹/₄

LED optic

50mm OD pole

105 / 4

109 / 4¹/₄

1.2 / 2⁵/₈

Up to 12 years

EN61000-6-3:1997. EN61000-6-1:1997

Signal colours compliant to IALA E-200-1

ISO9001:2008

US Pat. No. 6,667,582. AU Pat. No. 778,918

SEALITE® is a registered trademark of Sealite Pty Ltd

3 years

- IR Programmer (VDC model only)
- 200mm bolt pattern mounting plate
- Mounting assemblies
- Solar/battery systems
- Light sectoring
- Additional cable



* Specifications subject to change or variation without notice
* Subject to standard terms and conditions

Premier Materials Technology, Inc.

7401 Central Ave. NE • Minneapolis, MN 55432

Phone 763-785-1411 • Fax 763-785-1509



Manufactured by Sealite

Delivering quality marine products since 1992

www.premiermaterials.com

800-262-2275