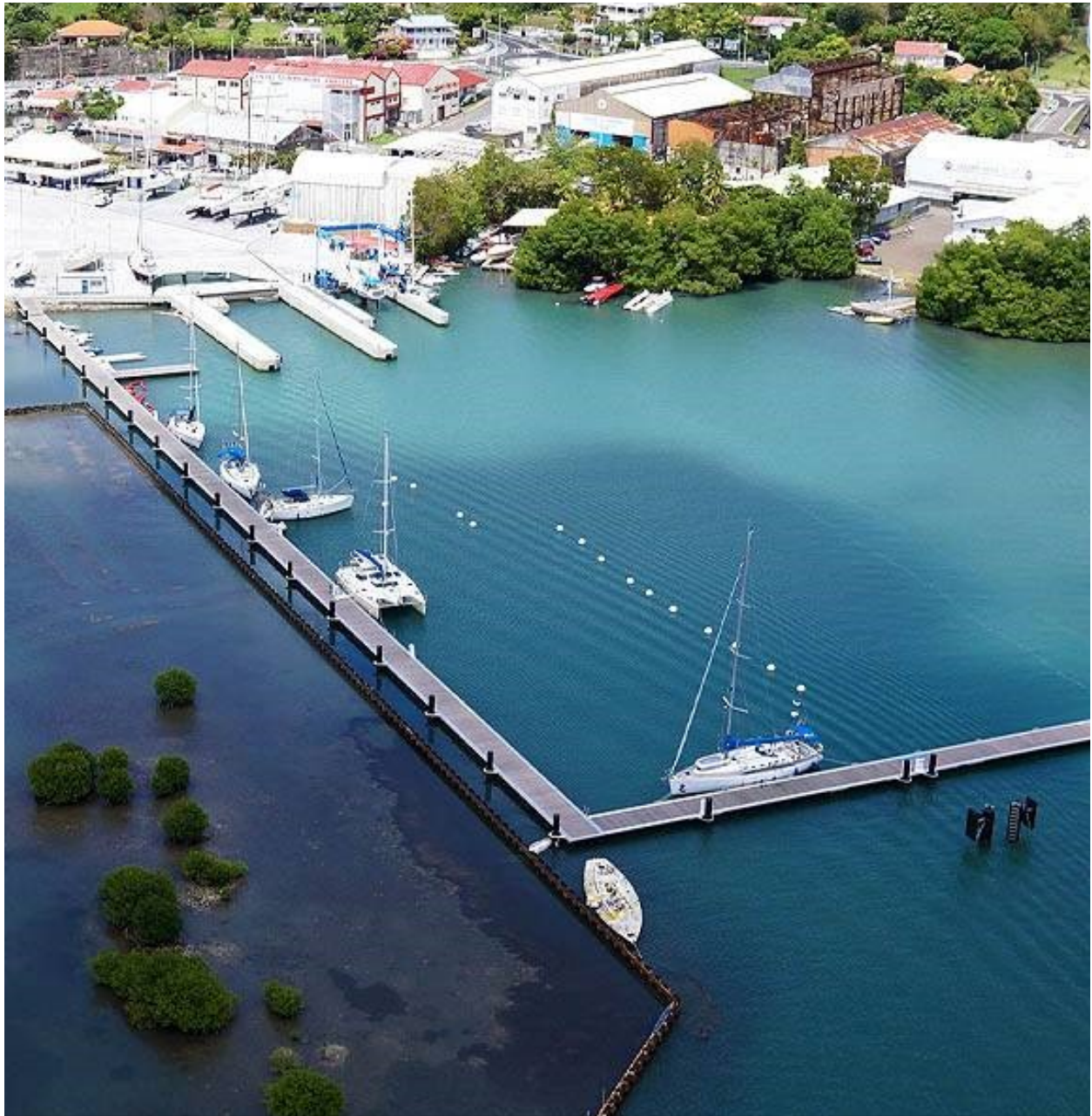


Marine Products Catalog



 **Premier
Materials**
Marine Solutions Since 1992



Let us be your consultant:

Premier Materials has over 50 years of marine experience, including active memberships in the industry associations that protect and improve the marine industry. Because of our active involvement in the industry, we know the marine industry thoroughly and we understand your needs. We are always prepared to act as an intermediary on your behalf when communicating with vendors and manufacturers. Most importantly, we work with you to evaluate your needs so we can deliver products and solutions for our current and future projects. We have your marine solution. Contact us today!

P.O. Box 120118
St. Paul, MN 55112

Phone: 763-785-1411 • 800-262-2275

Fax: 763-785-1509

Email: info@premiermaterials.com



Table Of Contents

Premier Floats

Flange & Standard Dock Floats	4
Marine Industry Standards	5
Float Specification Chart.	6
Barrier Floats.	7

Buoys

Mooring Buoys	7
Solar Illuminating Buoys	8
Spar & Marker Buoys	9

Solar Marine Lights

Bridge Lighting Kit	10
Solar Marine Lights: SL15 & SL60	10
Solar Marine Lights: SL70 & SLC-310	11
Solar Marine Lights: BL3	11
Solar Marine Lantern: M550	12
Solar Marine Lantern: M650	12
Solar Marine Lantern: M660	13
Solar Marine Lantern: M850	13
Solar Marine Lantern: M860	14
Solar Decking Light.	14
Solar Dock Light	15

Dock Accessories

Corners & Bumpers	15
-----------------------------	----

Smart Marina Solutions

Konnected 5G Distribution System + Dashboard	16
Konnected Technology: SmartMarina	17

Decking

Titan Deck.	18
Sure Step Decking	19



Premier Dock Floats



Flange



Standard

Flange & Standard

Your Benefits of Flange Floats:

- Easy Attachment ANYWHERE
- Labor savings on retrofitting an old dock system
- Heaviest Mounting Flanges
- No drilling mounting holes in frames on new docks
- Over 14 models of Flange Floats



*3/8" thick;
1 5/8" wide
flange all
around*

Your Benefits of all our Floats:

- Eagle Floats = Best Quality
- 40 Year Lifecycle & 15 Year Warranty
- Virgin Grade Resins for max. strength
- Meets ALL Industry Standards for Encapsulated Dock Floats
- Over 70 models of Standard Floats

Specifications:

- Virgin grade polyethylene material is used for the outer shell
- Virgin grade polystyrene is used for the expanded in-place foam
- Black is the standard color (other colors are available)
- 15 Year warranty on all Premier Floats!

Marine Industry Standards

For Encapsulated Dock Floatation

All our floats are tested to make sure they are up to code for encapsulated dock floatation. Below are testing procedures that each of our floats go through.



Encasement Wall Thickness Test

- Nominal 0.150 in. and minimum of 0.125 in.



ASTM D1998-06 Falling Dart Test

- Requires minimum impact of 90lbs. on specimen at -40° C

USACOE Regulation 36CFR Part 327.30

- Excludes the use of raw foam, defines requirements that encapsulated foam must meet.



7- Day Hunt Water Absorption Test

- Less than 3.0lbs per CF water absorption in 7 days.



Certified Tank-Tested Buoyancy

- Assures the dock manufacturer proper size and quantity of floats to meet the dock design.



Proprietary Computer Foaming System



Perfect Fusing Every Time



Automated Foaming in Process

Eagle Float Specifications

PART	CUBIC FEET	BUOYANCY	WEIGHT	T/L QTY
2072-06	4.6	270	39	690
2072-08	6.4	350	42	505
2436-08	3.6	205	26	828
2448-08	4.8	290	30	624
3648-08	7.5	460	35	396

2096-10	10.6	670	63	284
---------	------	-----	----	-----

1636-12	3.6	190	23	832
2436-12	5.4	300	31	56
2448-12	7.5	390	33	416
2460-12	8.8	500	35	331
2496-12	14.8	880	55	208
3048-12	9.5	540	38	336
3636-12	7.9	470	33	380
3648-12	11.1	620	41	278
3660-12	13.9	810	49	228
3672-12	16.9	950	61	189
3696-12	22.4	1250	81	139
4848-12	15.1	850	53	208
4860-12	18.9	1070	67	166
4872-12	22.8	1300	75	138
4896-12	30.4	1750	103	104

1872-16	10.9	640	41	255
2436-16	6.8	390	34	420
2448-16	9.9	530	35	312
2460-16	11.8	670	43	250
3636-16	10.8	620	39	261
3648-16	14.7	820	49	210
3660-16	18.4	1050	67	166
3672-16	22.3	1270	69	131
3696-16	29.7	1670	97	105
4848-16	20	1140	62	156
4860-16	25	1420	78	103
4272-16	26.5	1450	90	126
4872-16	30.3	1720	91	103
4896-16	40.3	2310	127	78

2448-18		620	37	260
3648-18		960	53	178

1248-20	5.7	310	27	520
2436-20		490	36	352
2448-20	12.2	680	39	260
2460-20	14.5	1020	68	172
3648-20	18.2	1050	54	176
3660-20	22.8	1310	65	134
3672-20	27.7	1580	81	114
3696-20	36.9	2080	107	88
4848-20	24.8	1430	70	130
4860-20	31.1	1750	92	103
4872-20	37.6	2120	117	86
4896-20	50.1	2910	134	65

PART	CUBIC FEET	BUOYANCY	WEIGHT	T/L QTY
1872-24	16	950	51	191
2436-24		570	41	277
2448-24	14.5	790	44	208
3648-24	21.7	1260	62	140
3672-24	33.1	1850	92	100
3696-24	44.1	2540	117	70
4848-24	29.6	1680	78	104
4860-24	37.1	2100	99	83
4872-24	45	2560	120	69
4896-24	60	3450	160	52

2496-28	33.5	1930	111	78
3636-28	16.7	1050	55	102
3648-28	25.1	1450	70	102
3672-28	38.3	2150	98	51
3696-28	51.1	2880	162	51
4848-28	34.8	1880	99	78
4872-28	52.2	3030	131	51
4896-24	69.6	4060	165	39

3648-32	28.5	1610	79	102
3672-32	43.5	2430	111	51
3696-32	58.1	3250	168	51
4848-32	39	2190	105	78
4872-32	59.3	3400	142	51
4896-32	79.1	4440	185	39

2448-36	21	1160	78	156
3696-36	65	3730	174	51
4848-36	43	2450	112	78
4872-36	66	3880	179	51
4896-36	89	5130	220	39

36120-20	46.1	2800	128	65
48120-20	63.3	3800	186	50
36120-24	55.8	3350	155	55
48120-24	75.7	4560	190	40
36120-32	73.6	4398	190	30
48120-32	100	5785	240	30

2448-08F	19.6	240	33	624
3547-08F	27	330	41	396
2436-12F	4.2	240	33	556
2448-12F	6.7	360	35	416
3648-12F	4.6	550	51	278
2436-16F	6.3	340	37	420
2448-16F	10.2	480	42	312
3648-16F	6.5	750	55	210
3446-16F	8.3	620	55	210
4848-16F	13.2	1060	75	156
4872-16F	12.5	1620	105	103
4672-16F	18.2	1400	105	103
2448-18F	28	530	43	260
3648-18F	27.9	870	62	178
2448-20F	9.3	600	45	260
3648-20F	14.9	960	58	176
4848-20F	10.3	1350	84	130
3648-24F	16.6	1140	66	140
4848-24F	22.6	1530	86	104

Pipe & Barrier Floats



SL-PF Series

Pipe Floats

Sealite pipe floats are rotationally molded from UV-Stabilized polyethylene, and can be secured around pipes, hoses, and cables for the use in marine environments such as dredging.



SL-BF-1830 Model

SL-BF-2436 Model

Barrier Floats

Sealite's Barrier Floats can be linked together to restrict boating traffic and swimmers from entering specific danger areas such as spillways and dams. They are manufactured using strong, UV-stabilized polyethylene and are available in a range of high visibility colors.

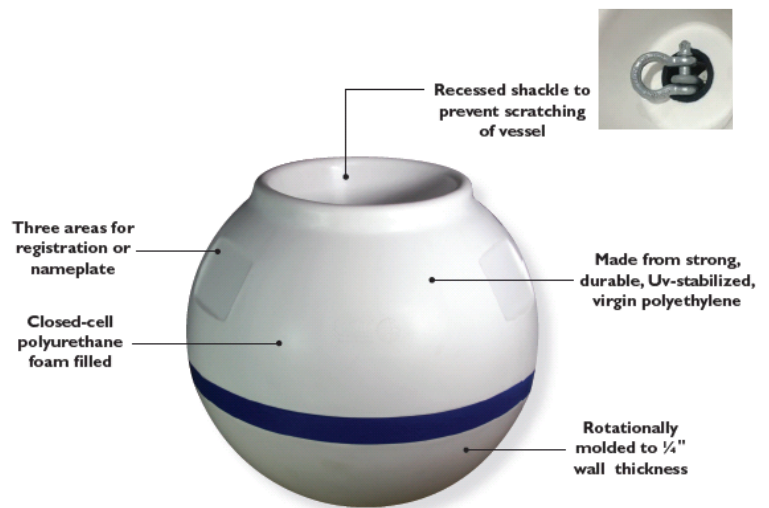
Sizes Available:

- 18" (457mm) Diameter
- 24" (610mm) Diameter

Sealite Advantage:

- Strong, rotationally molded polyethylene construction
- Manufactured in high visibility colors
- Easy to Install
- Internal Anti-Slip Mechanism
- Resistant to sea conditions
- Optional solar marine light for night visibility
- Additional models available

Mooring Buoys



Mooring Buoys

The range of Mooring Buoys are designed to offer customers long life and are suitable for a range of locations. These buoys have a recessed top section which allows the connecting shackle to be protected from scratching the vessel.

The Mooring Buoys are available in multiple sizes, range of colors for visibility, and optional reflective band and name plates.

If we don't have the size to fit your needs, contact us to discuss your application.

Key Advantages

- Recessed shackle prevents scratching of vessel
- No painting ever
- Strong polyethylene construction – 1/4" wall thickness
- Clear identification with optional graphics
- Eco-friendly and recyclable
- ISO9001-2008 Certified
- Molded in center pipe accepts chain up to 5/8" in diameter.

Models

- 18" Diameter, 24" Diameter, 32" Diameter, 38" Diameter, 42" Diameter

Solar Illuminating Buoys



Solar Illuminating Marker Buoy

The Solar Powered Marker Buoy is the foolproof way to mark your shoreline, swim area, and other obstacles. This illuminating buoy marker will keep swimmers, docks, and obstacles safe from boaters during the day and night.

Equipped with Magnet Technology, swipe the magnet over the solar panel at night to change between 7 brightness levels for user adjustable brightness and run times. You can also change between White, Blue, or Amber LED colors by holding the magnet for 5 seconds.

Advantages

- 6-46 hr. Run Time
- 60 Lumens
- Fresh Water Rated
- Salt Water Rated
- Changeable Batteries

Highlights

- Safety
- Visibility
- Durable
- Reflective Strip
- Great in Lakes, Rivers, and Bays



Solar Illuminating Buoy

The Solar Illuminating Pencil Buoy is the first solar powered silhouette illuminating buoys and are the safest available! You can not only see the buoy at night but read it as well. With magnet technology changing LED colors and brightness levels is at the tip of your fingers with a single swipe.

Made from rotationally molded poly-ethylene for uniform thickness, makes this solar illuminating buoy virtually indestructible. Will not crack or fracture from collisions or harsh environmental forces.

Advantages

- 6-46 hr. Run Time
- 60 Lumens
- Fresh Water Rated
- Salt Water Rated
- Changeable Batteries
- Many Label Options
- White, Blue, & Amber LED colors
- Poly-Ethylene material for durability
- 4 watt solar panels to ensure power on cloudy days

Spar & Marker Buoys



SL-B1060 Spar Buoy

Available in various sizes, the spar buoy is designed and used for regulatory, channel, or special marking harbors, lakes, and rivers.

This buoy is foam filled for strength and buoyancy along with being mold-ed in UV-stabilized polyethylene for durability.

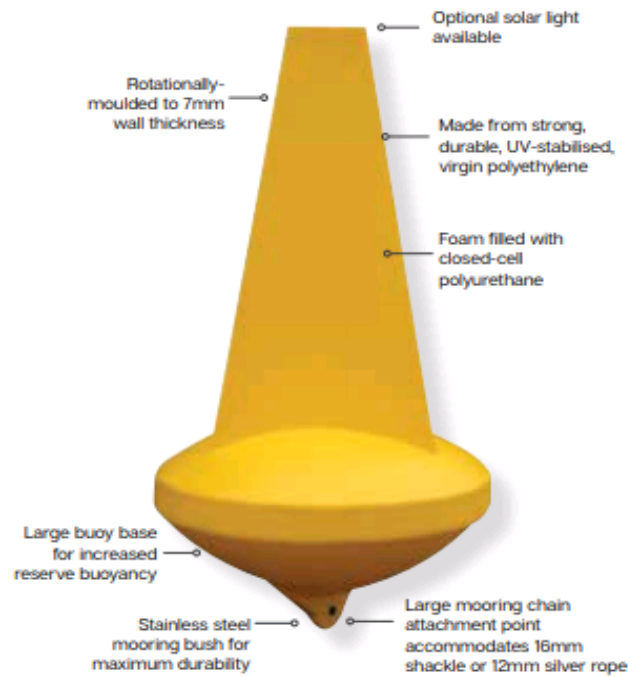


SL-B700 Regulatory Marker Buoy

This buoy is ideal for regulatory signage and for marking hazards, mooring fields, and channels in inland lake and rivers, as well as coastal harbors.

Advantages

- Durable, excellent buoyancy and stability
- Long service life
- Mold-in graphics to suit customer requirements
- Low cost
- Made from strong, durable UV-stabilized polyethylene
- Meets U.S. Federal, state, and local regulations



SL-B600/B700 Marker Buoy

Short-range marker buoy ready for immediate installation. Typical applications include day and night channel, speed zone restriction, and restricted area marking.

Advantages

- High visibility red, green, white or yellow available as per IALA recommendations
- Range of mooring equipment & chain available
- Great buoyancy & stability
- 16mm shackle or 12mm silver rope attachment point
- Mold-in graphics to suit customer requirements



Solar Marine Lights

Solar Bridge Lighting Kit

Sealite's SL-BRK is a Solar Bridge Lighting Kit specifically designed to clearly mark bridges and structures extending over navigable waterways.

The SL-BRK features a large solar power supply (10watt solar module with 7.5 SLA battery), positioned at the top of the assembly to maximize solar collection.

Lantern is steady on, but has other flash & sectoring settings to suit your local regulations.

Optional long extension arm ensures clear visibility to mariners below.

PLEASE NOTE: The extension arm is NOT included with the kit.



Night Marking Bridge Structures Include:

Red or Green lights mark the navigable limits of the channel in accordance with IALA Maritime Buoyage System located on the bridge piers, under the span, or on a buoy/beacons in the water.

White light(s) mark the "best point of passage" located under the span and exhibit a safe water mark character.

- Contact your local authority for a full description of bridge marking requirements from your region.
- For a copy of the IALA Recommendations for the marking of fixed bridges over navigable waters, please contact Sealite.



SL-15 1-2NM+ Solar Marine Lantern

Advantages:

- User adjustable flash characters
- User replaceable battery
- NiMH battery for long service life & wide temperature range
- Completely sealed & self-contained using advanced UV-Sealing
- IP68 waterproof
- Easy to install & operates maintenance free for up to 5 years.
- Optional ON/OFF external switch



SL-60 2-3NM+ Solar Marine Lantern

Advantages:

- IR Programmable
- 256 IALA flash patterns
- User replaceable battery
- NiMH battery for long service life & wide temperature range
- Multiple intensity settings
- ON/OFF storage switch
- IP68 waterproof
- Optional 200mm bolt pattern base

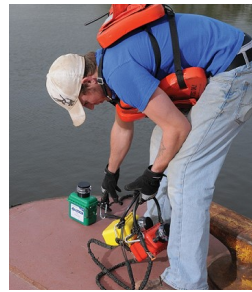
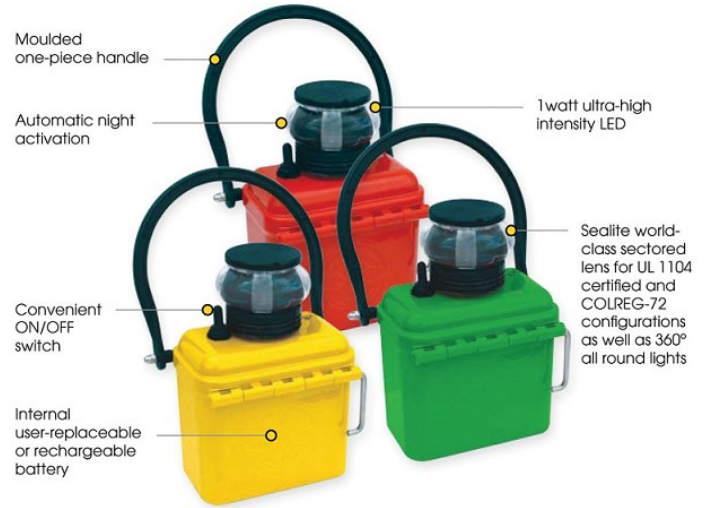
Solar Marine Lights



SL-70 2-3NM+ Solar Marine Lantern

Advantages:

- IR programmable
- Reliable year-round operation in low sunlight conditions
- 256 IALA flash patterns
- User-replaceable battery
- NiMH Battery = long service life & wide temperature range
- Multiple intensity settings
- ON/OFF storage switch
- IP68 waterproof



BL3 Barge LED Running Lights

Advantages

- LED Technology & Circuitry design requires only 1 LED lasting up to 10x longer [20+ years]
- Advanced Circuitry allow for 100% less battery cost
- Requires only one battery lasting 35% longer
- Advanced Circuitry maintained light source intensity as battery volt-age varies
- Labor and product savings due to product design
- 12 year life expectancy – big saving in operation and maintenance
- Weighs 40% less and carrying handle provides ease in handling more than one light

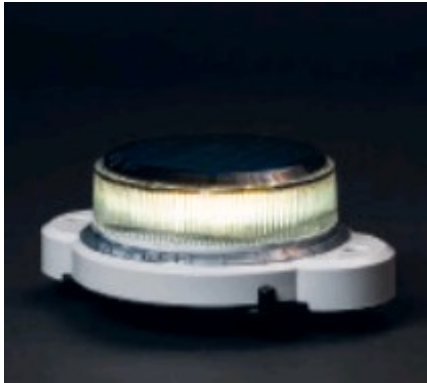
SLC-310 3-5NM+ Solar Marine Lantern

Advantages:

- IR programmable
- Fitted with on-board GPS as standard for synchronized flashing
- Simplicity design ensures ease of maintenance in the field
- Heavy-duty aluminum construction
- All components user-replaceable in unlikely event of damage
- 200mm bolt pattern for immediate installation on existing structures
- User-replaceable battery



Solar Marine Lanterns



M550 Solar Powered LED Self-Contained Lantern

This Marine lantern can reach up to 3NM range offering up to 3 times the range at half the size of its M502 predecessor. Using custom optics, high-efficiency solar panels, and premium materials. This lantern is now equipped with replaceable, recyclable batteries providing excellent value and reliable operation for over five years.

Advantages

- 40 user-adjustable flash patterns and programmable intensities
- Replaceable, recyclable, high-temperature-rated NiMH AA batteries
- Automatic Light Control (ALC) 2.0; achieve optimal intensities throughout the year
- Premium grade, UV resistant polycarbonate body and lens material
- IP 68 rated
- Ventilated battery compartment
- Optional external ON/OFF switch



M650 Solar Powered LED Self-Contained Lantern

The M650 is a cost effective, self-contained, high-performance, low maintenance and easy-to-install solar LED marine lantern. This lantern can range up to 2-4NM and mainly used for buoys and minor beacons. Also featuring a replaceable battery pack that extends the service life beyond five years, reducing the total cost of ownership.

Some major applications include: marina lighting, dock lighting, marine aids-to-navigation, and port lighting.

Advantages

- Standard IALA colors: Red, Green, Yellow, White, Blue
- High-efficiency solar cells with bypass and blocking diode function. Maximum power point tracking (MPPT) for optimal energy collection
- Premium grade UV resistant, polycarbonate/polysiloxane
- Co-polymer body and lens material
- Color-specific temperature corrected LED drivers provide consistent intensity under all operating conditions
- IP 68 rated. Double O-ring sealing with waterproof vent
- SLA battery
- Ventilated battery compartment
- Adjustable intensity and range
- Vertical divergence > 8°
- Programmable with On-Board User Interface, USB port, or optional wireless IR-Programmer
- Integrated event-log
- Optional ON/OFF switch
- Optional external charger
- Optionally integrated GPS synchronization



Solar Marine Lanterns



M660 Solar Powered LED Self-Contained Lantern

A high-performance, long life, easy-to-use and cost effective self-contained solar LED marine lantern up to 4NM Range. The M660 features a Li-ion battery pack that extends the service life of the lantern for up to 8 years! With 4 different mounting options and can be programmed and controlled with Bluetooth Control.

Advantages

- Standard IALA colors: Red, Green, Yellow, White, Blue
- Ventilated battery compartment
- Adjustable intensity and range
- Vertical divergence > 8° (FWHM)
- High-efficiency solar cells. MPPT for optimal energy collection
- Premium grade UV resistant, polycarbonate/polysiloxane co-polymer body and lens material
- IP 68 rated. O-ring sealing with waterproof vent
- Li-ion battery, optional dual pack
- Programmable with Bluetooth Control and IR-Programmer
- Optional ON/OFF, external charger and charging port



M850 Solar Powered LED Self-Contained Lantern

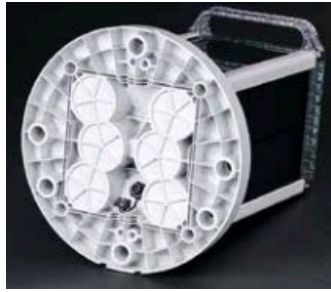
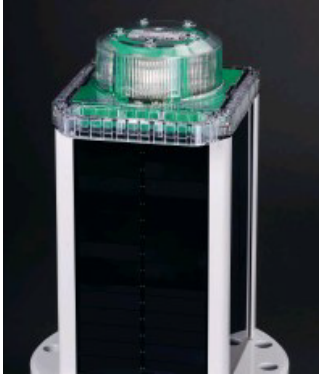
Combines a compact, high-efficiency solar engine with premium components and a rugged design for best-in-class performance at an optimal price. This cost optimized lantern is suitable for use in most solar lo-cations and achieves up to 387 CD and over 7NM range.

Advantages

- Option for standard or wide divergences (for fixed or floating applications)
- Multiple cost-effective battery pack options suitable for a wide variety of installation locations
- Built-in calendar function for automatic deactivation during off-season months
- Top-mounted 4-character LED display with simple "tap to activate" functionality
- Premium grade, UV resistant polycarbonate lens material
- Environmentally friendly, super durable powder coated aluminum chassis
- Adjustable intensity and range
- IP 68 rated
- GPS synchronized flash option



Solar Marine Lanterns



M860 Solar Powered LED Self-Contained Lantern

Similar to the M850, the M860 is durable with a large-format solar engine. This lantern is engineered for consistent, reliable performance at remote installations and in challenging insolation locations.

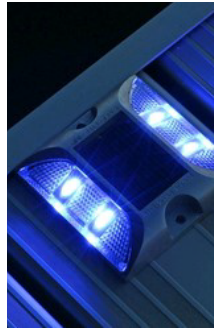
This premium, full-featured lantern is suitable for achieving longer ranges in those challenging insolation locations offering up to 457 CD and over 7NM range.

Advantages

- Option for standard or wide divergences (for fixed or floating applications)
- Multiple cost-effective battery pack options suitable for a wide variety of installation locations
- Built-in calendar function for automatic deactivation during off-season months
- Top-mounted 4-character LED display with simple "tap to activate" functionality
- Premium grade, UV resistant polycarbonate lens material
- Environmentally friendly, super durable powder coated aluminum chassis
- Adjustable intensity and range
- IP 68 rated
- GPS synchronized flash option
- Remote monitoring options available



Solar Deck Lighting



Solar Deck Lighting

Tired of losing guests off your dock? Solar Deck Lights are the solution for you! Industrial-strength solar powered deck lights can illuminate your walkway and make a safe passage for all boating guests.

Solar Deck Lights come with four super bright LED's, powerful solar rechargeable batteries and solar panel to provide all-night illumination. Made from anodized aluminum for superior protection and harsh marine environments. With user-replaceable solar rechargeable AAA batteries you cant go wrong!

Advantages

- 8 Hour Run Time
- Sea Turtle Friendly
- 8-10 Lumens
- Fresh Water Rated
- Salt Water Rated
- Changeable Batteries
- IP 68 Water-Proof Design
- Easy Installation
- Colors: White or Blue LED

Solar Dock Lighting

Solar Dock Lights

Solar Dock Post Lights come installed with White LED's with additional colored LED's can be purchased separately. Perfect way to distinguish your dock from the neighbors. Solar panels charge up the replaceable batteries, which help the light run up to 18+ hours on a full charge. There are 3 different post settings, round, square, and rectangle, which accommodate any dock you have!

Round Base Fits:

- 1-5/8" OD
- 1-7/8" OD
- 2" OD
- 2-3/8" OD
- 3-1/4" OD
- Brock Dock Post Covers

Square Base Fits:

- 2x2" Square
- 2x2" 5-sided square
- Brock Dock Post Covers

Rectangle Base Fits:

- 1-1/2" Rectangle
- Brock Dock Post Covers

Advantages

- 18 Hour Run Time
- 8-10 Lumens
- Fresh Water Rated
- Changeable Batteries
- LED Color Options
- 4x Brighter than solar garden lights



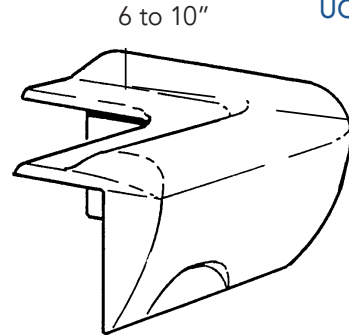
Dock Accessories



Dock Corners

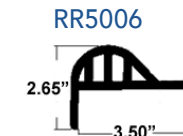
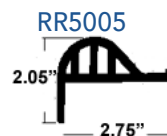
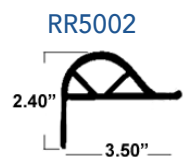
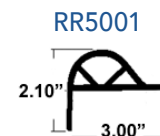
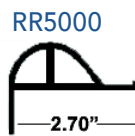
Made from marine-grade PVC with UV inhibitors, our 6 and 10 inch dock corners are available in a non-marking white.

- UC30550 6 Inch Corner
- UC30600 10 Inch Corner



Dock Bumpers

Available in either P-style or flat. Our flexible PVC will not crack, rot or deteriorate when exposed to extreme temperatures. It is unaffected by oil, gas or saltwater and has UV inhibitors to prevent yellowing and deterioration from sunlight. We even add a fungicide. All styles come in 10 foot lengths, in either white or black.



Konnected 5G Distribution System + Dashboard

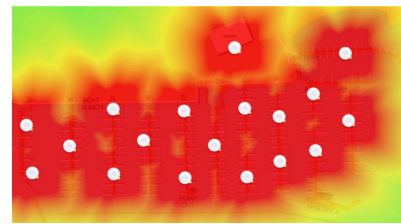
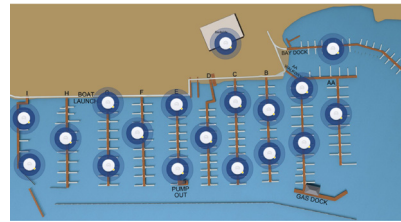
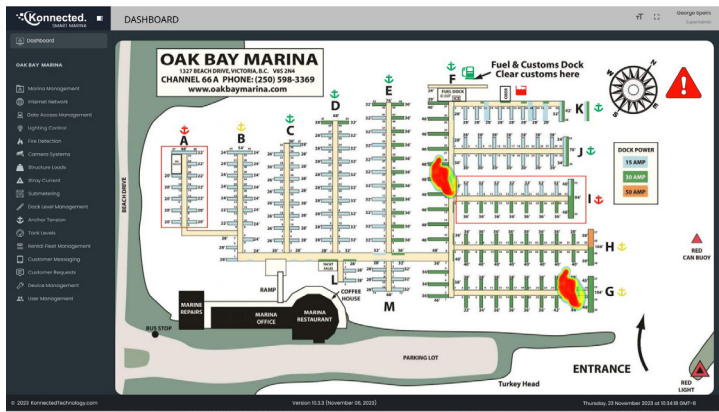
Equal Access for All

Welcome to a worry-free internet distribution smart solution designed exclusively for Marinas – by Konnected. In the world of boating, where data and Wi-Fi inconsistencies can be a challenge, our comprehensive system ensures reliable connectivity, balancing data and bandwidth to enhance each boaters internet experience.



Once and for all solve your internet connection problems?

- Solves the reliance on bad internet options.
- Addresses poor internet or insufficient coverage due to number of users.
- Eliminates the issue of one boater monopolizing data due to proximity.



Benefits to Marinas:

- Improved User Experience for all boaters
- Creates a new revenue stream for Marina Management
- Connectivity system that enables individual management/billing of boaters/slips
- Supports unlimited internet providers and connections. (works with Konnected or Existing internet providers)
- Automatically Balances data usage between users for optimal performance

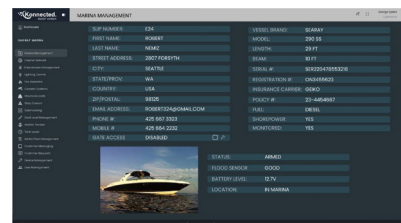
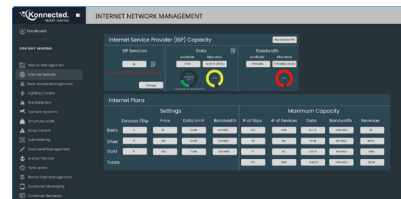
More about our solution:

Konnected 5G Distribution System + Dashboard:

Our fully managed local area network distribution employs a powerful WAN network featuring Access Points, Switches, Balancers, and support for unlimited incoming internet connections. What makes us different? Equal Data Distribution across any distance from the router location.

How We Do it?

Based on the size of your marina we will install the proper number of access points and necessary software to handle and distribute an unlimited number of internet connections.



Worry-free internet distribution solution for marinas, ensuring reliable connectivity, individualized management, and efficient data balancing. Upgrade your marina's connectivity today and provide an unparalleled experience for all boaters.

SmartMarina Solutions

We Make Marinas Smart

Elevate marinas into the future by collaboratively modernizing infrastructure, implementing task automation, and improving response times for enhanced functionality, safety, and customer satisfaction.



Konnected Technology: Revolutionizing Marinas with Smart Solutions

At Konnected Technology, our mission is to transform marinas into hubs of innovation through comprehensive modernization. Collaborating with builders and marina ownership, we prioritize upgrading infrastructure to enhance functionality, safety, and overall customer experience. Our approach involves holistic modernization, covering everything from smart docks, navigation, and monitoring to safety, smart access, amenities, and advanced technology.



Early Warning Fire Detection

Konnected Fire Detection systems leverage thermal imaging cameras for early fire detection.



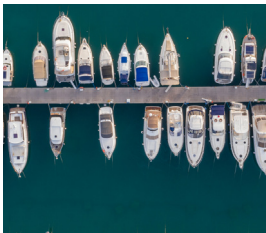
Smart Access

Automation for access control to regulate entry to specific areas within the marina.



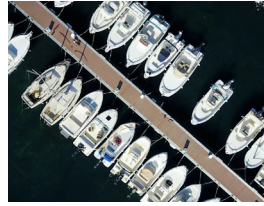
Smart Leveling/Floats

Solutions for maintaining optimal dock levels within the marina.



Smart Anchor Control

Comprehensive anchor control to help you monitor and control tensions during varying environmental conditions.



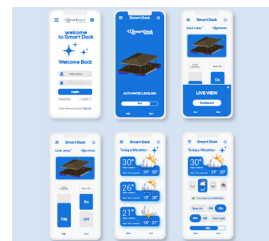
Reporting/Monitoring

Comprehensive reporting and monitoring solutions for various marina elements.



Smart Docking and Berthing

Technology solutions for bringing smart solutions to the moorage holder.



Communication and Connectivity

Solutions to improve communication and connectivity within the marina.



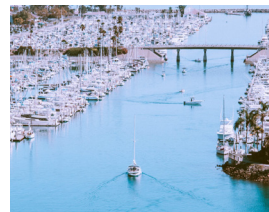
Maintenance and Asset Management

Solutions for tracking and maintaining marina assets.



Smart Navigation Overview

Smart Navigation solutions integrate beacon (other) lights and remote monitoring for heightened safety and efficiency. Intelligent LED beacons guide vessels with precision, enhancing marina experiences.



Rental Fleet Management

Smart rental fleet solutions such as GEO fencing, and automatic return notifications to help manage your boat rentals.



Dock Mounted Kiosk

Smart Kiosks help provide a quick and easy way to book marine services while staying informed on issues/alerts.

Distributed by
Premier Materials 17

Decking



Titan Deck

Made from 100% polypropylene plastic, Titan decking will not rot, warp, dent, splinter or bend. Also, will never need painting or staining. Its UV protected, barefoot friendly that stays cool to the touch even in extreme temperatures.

Product Features:

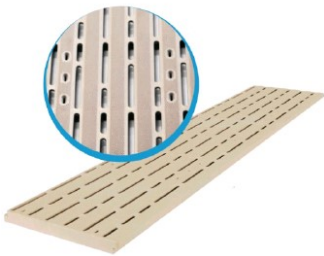
- Two standard colors: Mushroom & Gray
- Up to 16" centers non-reinforced
- Up to 24" centers need reinforced
- Designed to allow dirt & debris pass through, as well as sunlight for vegetation below
- Will not rot, curl, warp, dent, splinter or bend
- Never needs paint or stain
- Design can minimize damage from mother nature
- Manufactured in individual boards for flexible and easy installment



Board Selections

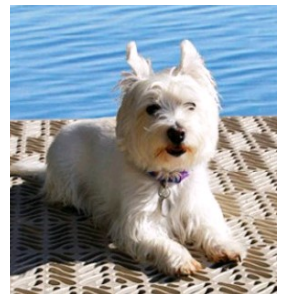
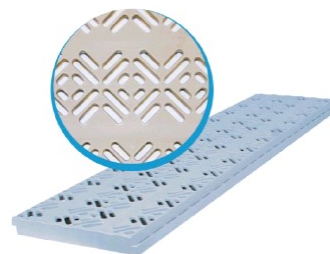
Titan Classic (available in reinforced)

- Available in 2', 3', 4', 5' lengths
- Depth: 1.125" | Width: 12"

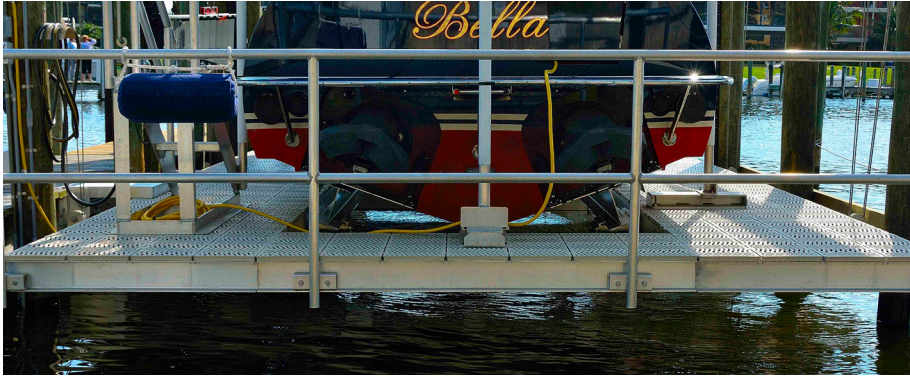


Titan X-Series (available in reinforced)

- Available in 2', 3', 4', 5' lengths
- Depth: 1.5" | Width: 12"



Decking

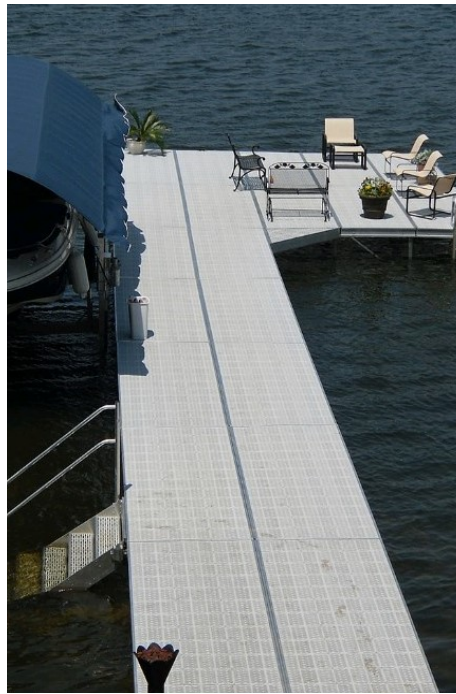


Sure-Step Decking

Perspective Product's manufacturing expertise goes back to 1989. We continue to manufacture high quality, long lasting, durable products with ISO 9001 standards. Our proven test results along with a warranty that exceeds most competitors gives you the assurance you need.

Sure-Step Interlocking Decking Systems for Docks

- Environmentally friendly chevron pattern designed for sunlight, wind, and water protection.
- Keeps vegetation alive and minimizes wave force to keep dock stable.
- "A cradle to cradle product" meets today's "Going Green" challenge.
- No fault spacing & alignment creates a uniform pattern.
- Made from UV resistant virgin polypropylene.
- High impact material exceeds competition.
- Slip resistant for a safer surface in a marine environment,
- Barefoot friendly surface remains cool.
- Lightweight.
- Maintenance free and easy to install.



Sure-Step Standard Deck Panel

- Available sizes:

3ft Standard 1" x 12" x 35.50"
3ft Plus 1.2" x 12" x 36"
Weight 4.05lbs

4ft Standard 1" x 12" x 47.50"
4ft Plus 1.2" x 12" x 48"
Weight 5.45lbs

5ft Standard 1" x 12" x 59.50"
5ft Plus 1.2" x 12" x 60"
Weight 7.0lbs

4ft x 4ft Std. 1" x 47.50" x 47.50"
Weight 27.0lbs



- Available in 3 basic colors:

Harbor Gray 

Sandcastle Tan 

Mystic White 



Premier Materials has been and continues to deliver the highest quality marine and solar products to marina, developers, dock builders, government agencies, dredgers, barge and towing, marine contractor/construction, and homeowners since 1992. Our distribution network offers fast delivery for a single unit to a truckload. All products are warranted against manufacturing defects or premature failures. Premier's Commitment to you is two-fold. One to provide only the highest quality products that meet rigid manufacturing, industry testing and regulatory agency standards. Two, and most importantly, is to provide the best customer service possible. We don't stop until your needs and requirements are met.

P.O. Box 120118
St. Paul, MN 55112

Phone: 763-785-1411 • 800-262-2275

Fax: 763-785-1509

Email: info@premiermaterials.com